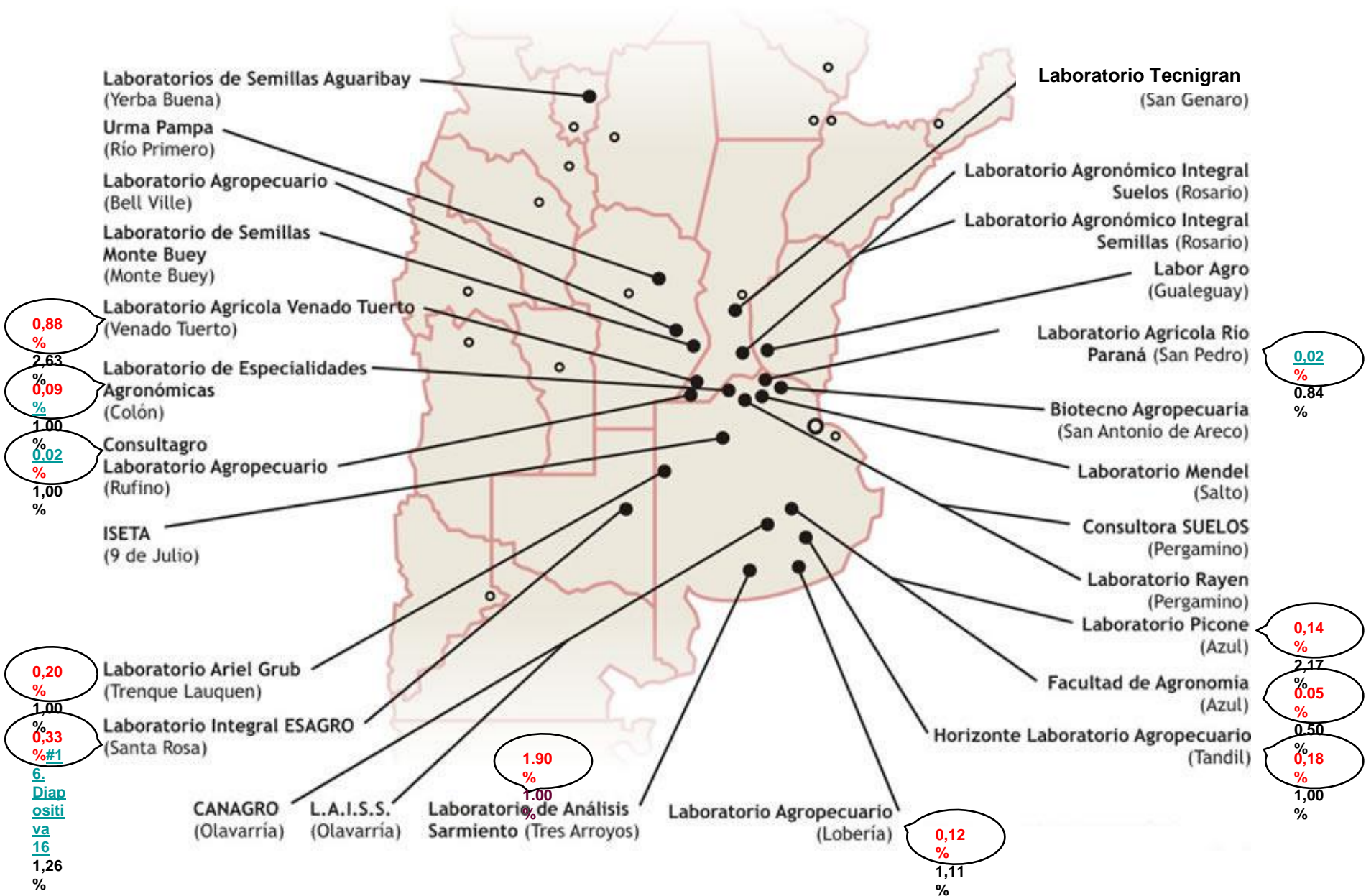


Cercospora sojina (MOR) ALAP 2010/2011



INCIDENCIA total de muestras %

INCIDENCIA muestras positivas %

6. Diaprositi va 16 1,26 %

Laboratorio Tecnigran

PREVALENCIA



Laboratorio Agronómico Integral Semillas

PREVALENCIA



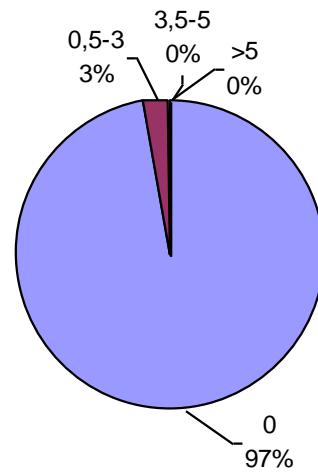
Labor Agro

PREVALENCIA



Laboratorio Agrícola Río Paraná

PREVALENCIA



Biotecnología Agropecuaria

PREVALENCIA



Laboratorio Mendel

PREVALENCIA



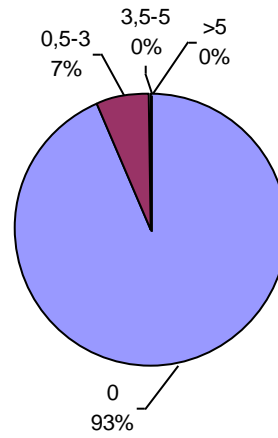
Laboratorio Rayen

PREVALENCIA



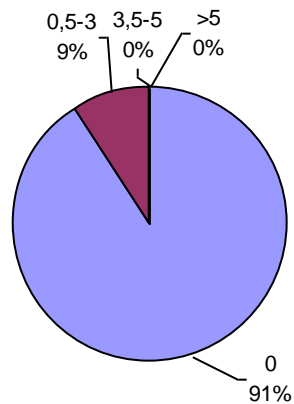
Laboratorio Picone

PREVALENCIA



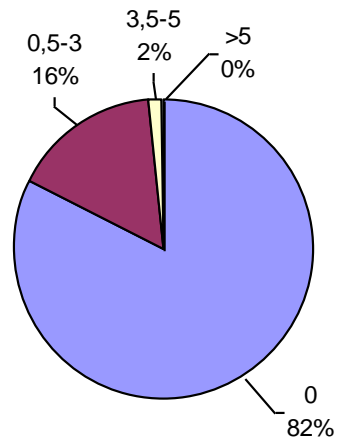
Facultad de Agronomía Azul – (UNCPBA)

PREVALENCIA



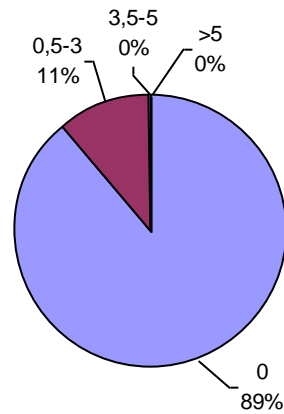
Horizonte Laboratorio Agropecuario

PREVALENCIA



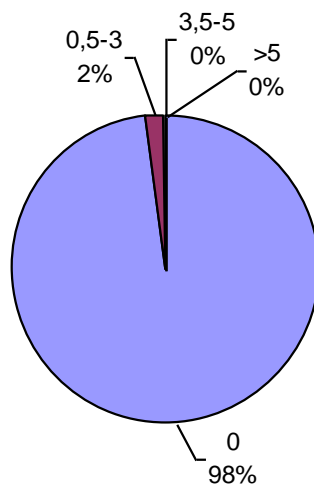
Laboratorio Agropecuario Lobería

PREVALENCIA



Laboratorio de Análisis Sarmiento

PREVALENCIA



L.A.I.S.S.

PREVALENCIA



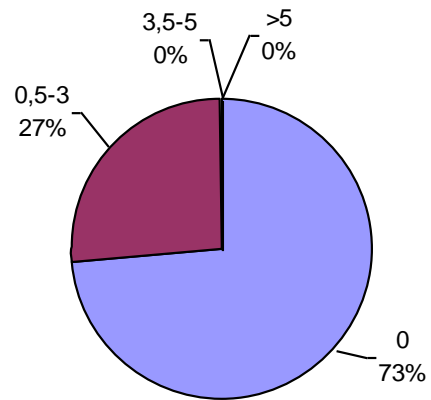
Canagro

PREVALENCIA



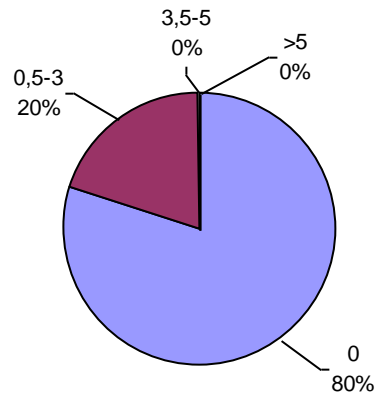
Laboratorio Integral Esagro

PREVALENCIA



Laboratorio Ariel Grub

PREVALENCIA



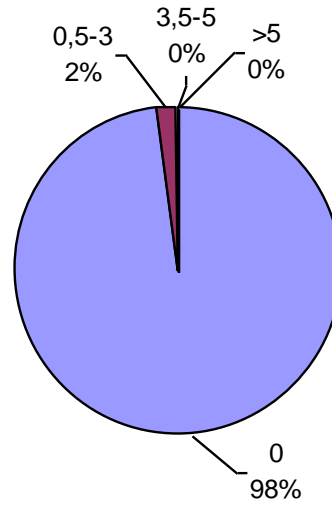
I.S.E.T.A.

PREVALENCIA



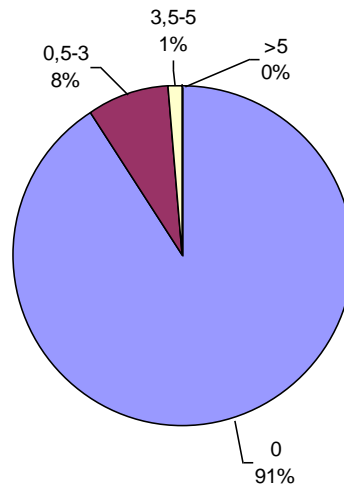
Consultagro

PREVALENCIA



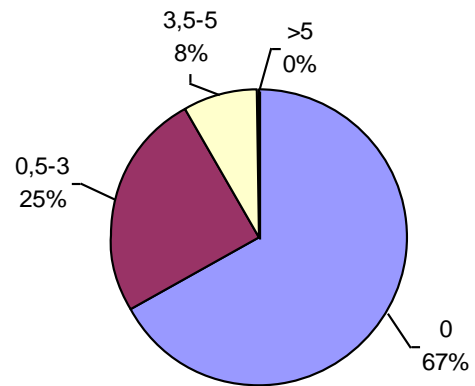
Laboratorio de Especialidades Agronómicas

PREVALENCIA



Laboratorio Agrícola Venado Tuerto

PREVALENCIA



Laboratorio de Semillas Monte Buey

PREVALENCIA



Urma Pampa

PREVALENCIA



Laboratorio de Semillas Aguaribay

PREVALENCIA

