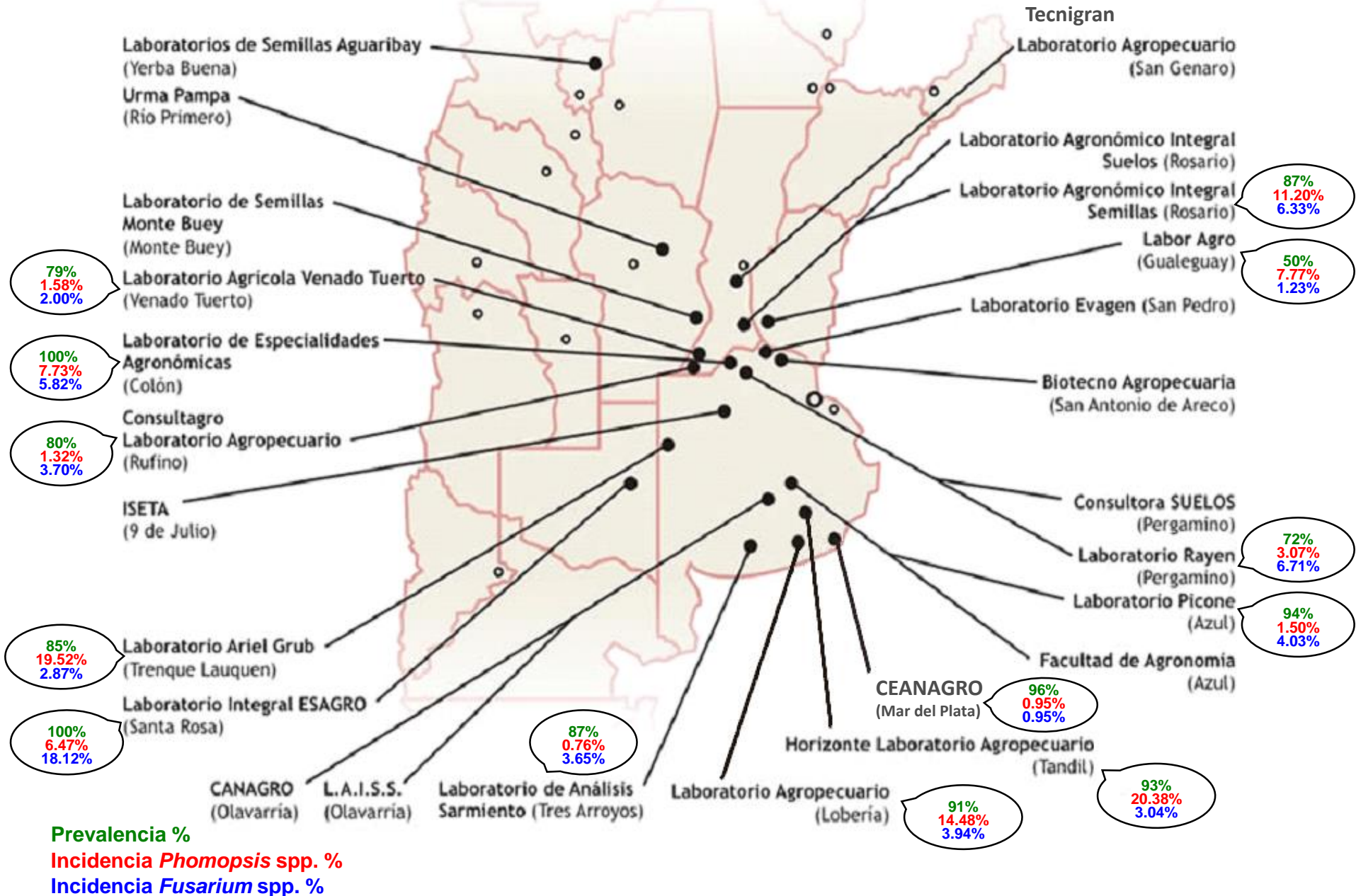


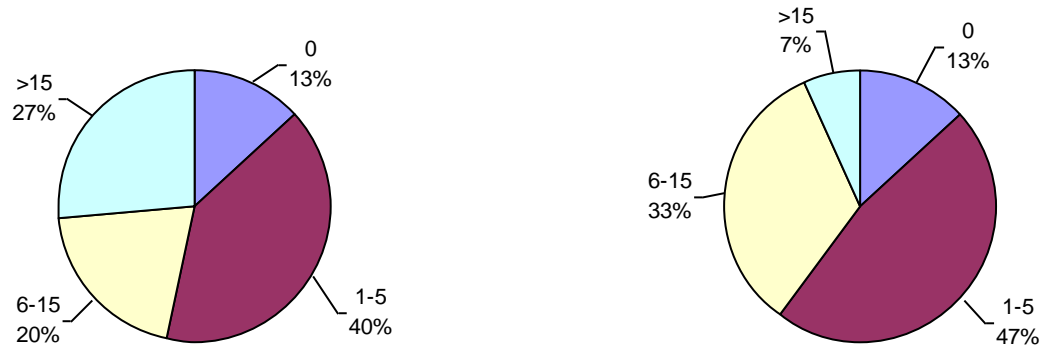
# Prevalencia e incidencia de *Phomopsis* spp. y *Fusarium* spp.

## ALAP 2013/2014



# Laboratorio Agronómico Integral Semillas

## Prevalencia %



### Incidencia (% sobre muestras positivas)

*Phomopsis spp.*

**12.92%**

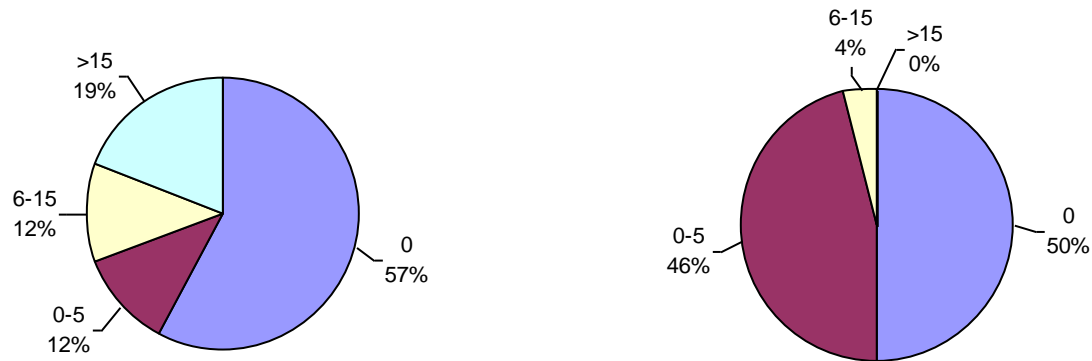
*Fusarium spp.*

**7.31%**



# Labor Agro

## Prevalencia %



### Incidencia (% sobre muestras positivas)

*Phomopsis* spp.

**18.36%**

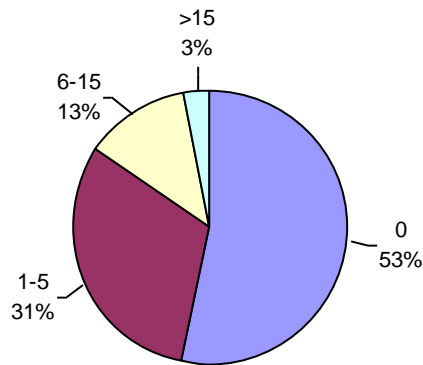
*Fusarium* spp.

**2.46%**



# Laboratorio Rayen

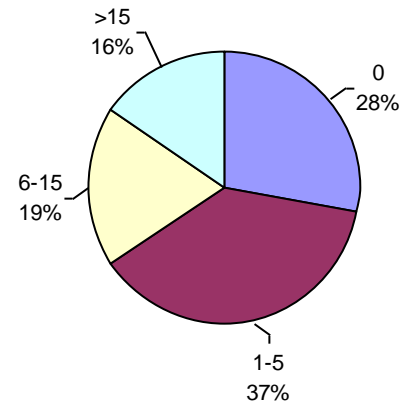
## Prevalencia %



**Incidencia (% sobre muestras positivas)**

*Phomopsis* spp.

**6.56%**



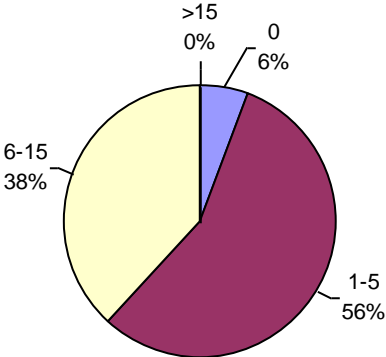
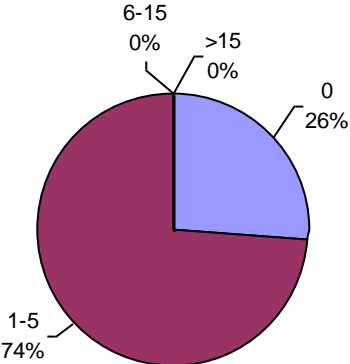
*Fusarium* spp.

**9.34%**



# Laboratorio Picone

## Prevalencia %



### Incidencia (% sobre muestras positivas)

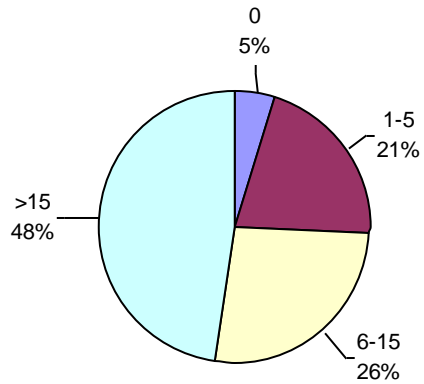
*Phomopsis* spp.  
**2.13%**

*Fusarium* spp.  
**4.28%**

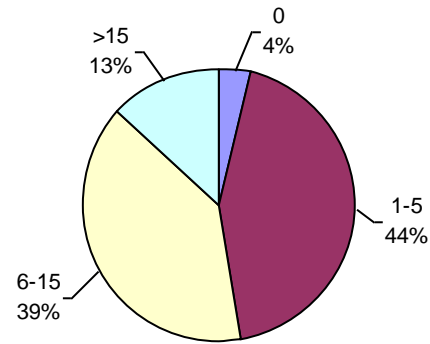


# Laboratorio CEANAGRO

## Prevalencia %



**Incidencia (% sobre muestras positivas)**  
*Phomopsis* spp.  
**1.00%**

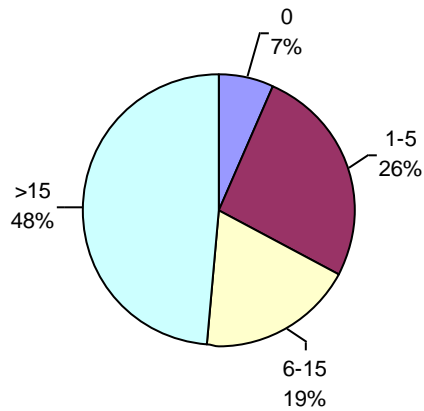


*Fusarium* spp.  
**1.00%**

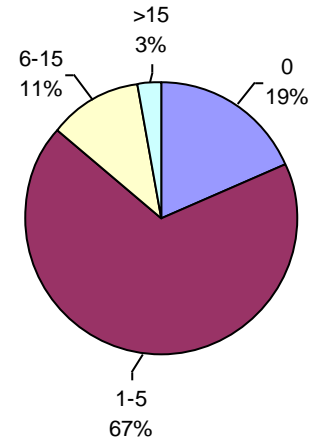


# Horizonte Laboratorio Agropecuario

## Prevalencia %



**Incidencia (% sobre muestras positivas)**  
*Phomopsis* spp.  
**21.81%**

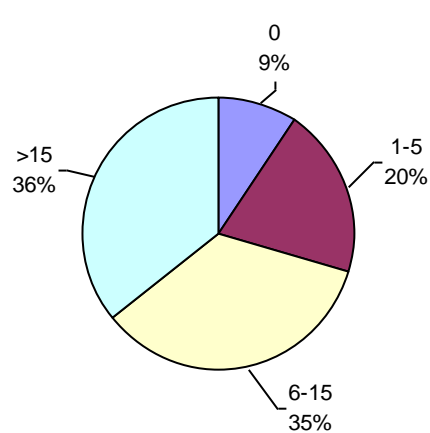


*Fusarium* spp.  
**3.74%**

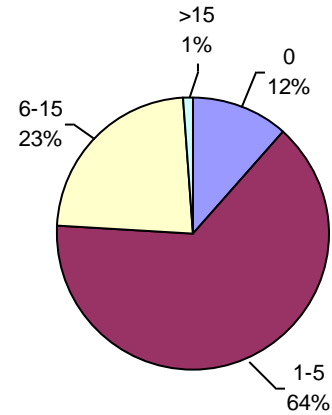


# Laboratorio Agropecuario Lobería

## Prevalencia %



**Incidencia (% sobre muestras positivas)**  
*Phomopsis* spp.  
**15.99%**



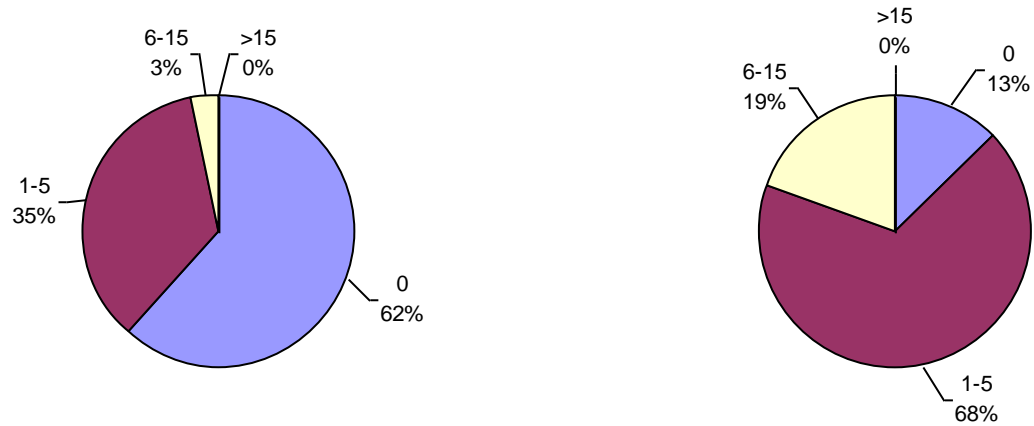
*Fusarium* spp.  
**4.46%**





# Laboratorio de Análisis Sarmiento

## Prevalencia %



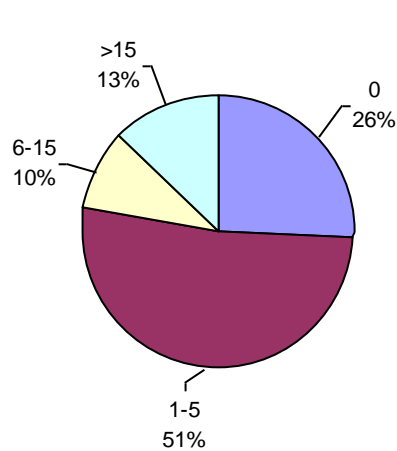
**Incidencia (% sobre muestras positivas)**  
*Phomopsis* spp.  
**1.96%**

*Fusarium* spp.  
**4.19%**



# Laboratorio Integral Esagro

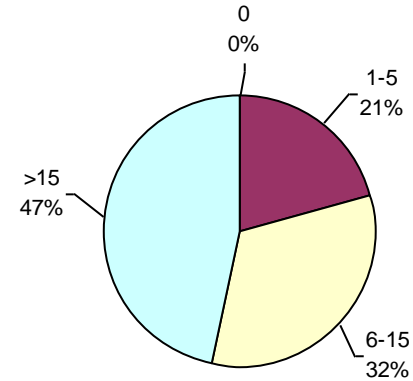
## Prevalencia %



**Incidencia (% sobre muestras positivas)**

*Phomopsis* spp.

**8.71%**



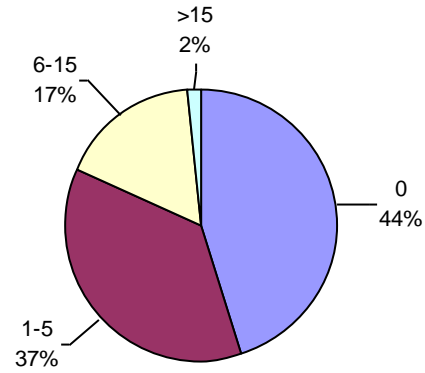
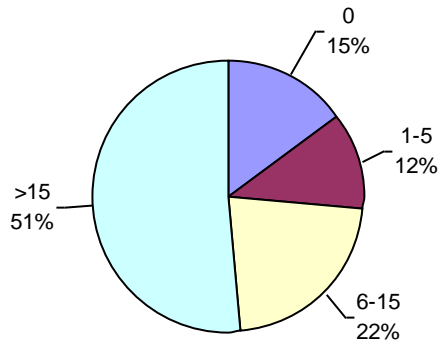
*Fusarium* spp.

**18.12%**



# Laboratorio Ariel Grub

## Prevalencia %



### Incidencia (% sobre muestras positivas)

*Phomopsis* spp.

**22.96%**

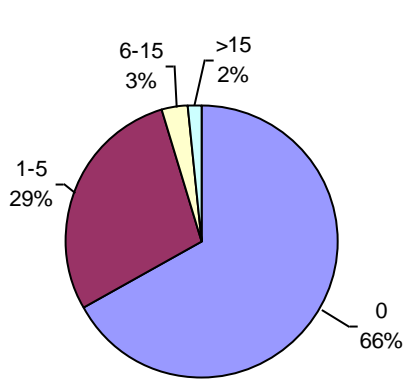
*Fusarium* spp.

**5.21%**

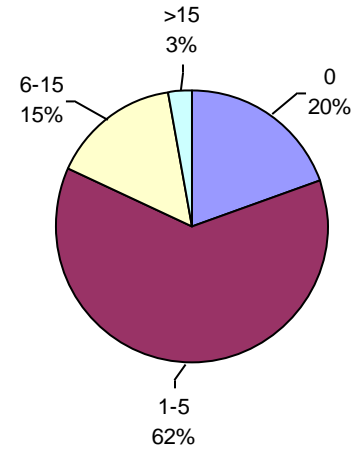


# Consultagro

## Prevalencia %



**Incidencia (% sobre muestras positivas)**  
*Phomopsis* spp.  
**3.97%**

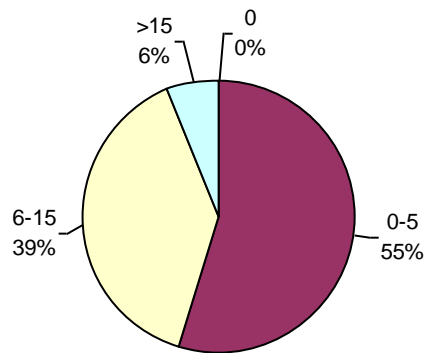


*Fusarium* spp.  
**4.62%**

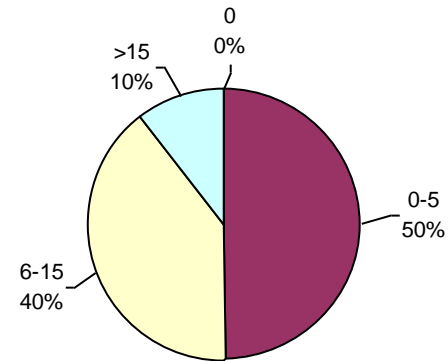


# Laboratorio de Especialidades Agronómicas

## Prevalencia %



**Incidencia (% sobre muestras positivas)**  
*Phomopsis* spp.  
**7.73%**

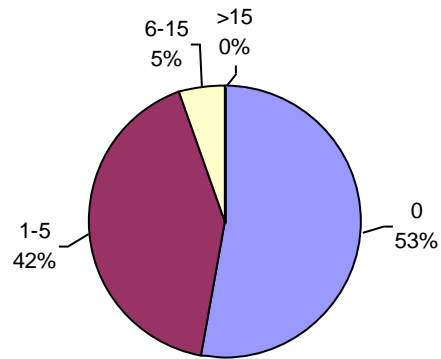


*Fusarium* spp.  
**5.82%**

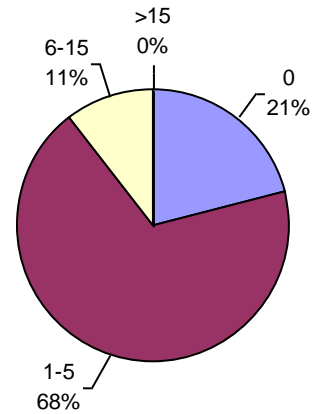


# Laboratorio Agrícola Venado Tuerto

## Prevalencia %



**Incidencia (% sobre muestras positivas)**  
*Phomopsis* spp.  
**3.33%**



*Fusarium* spp.  
**2.53%**

