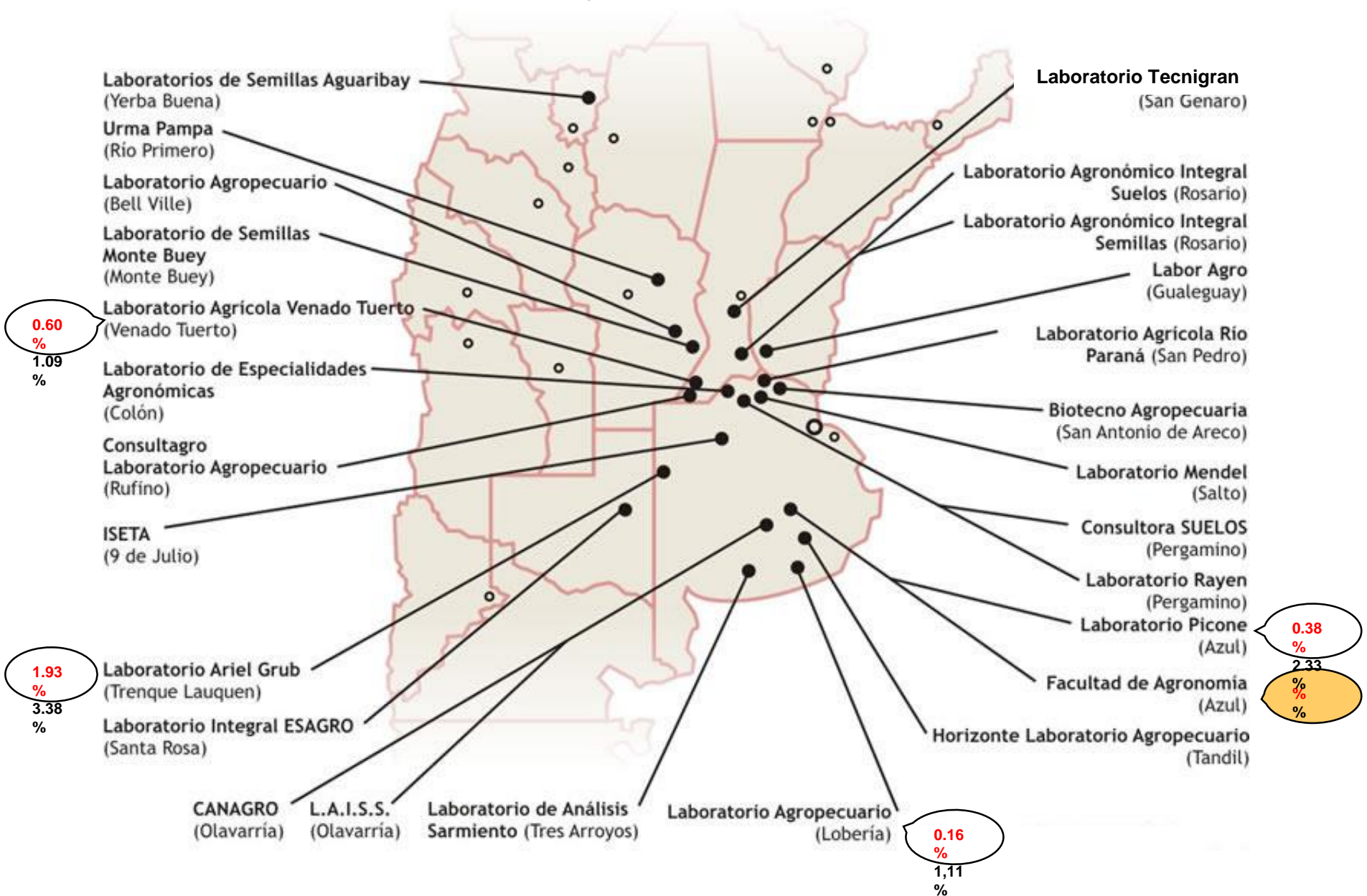


Cercospora sojina (MOR) ALAP 2011/2012

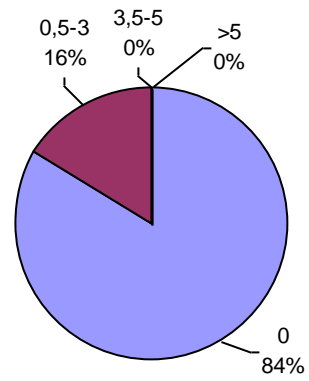


INCIDENCIA total de muestras %

INCIDENCIA muestras positivas %

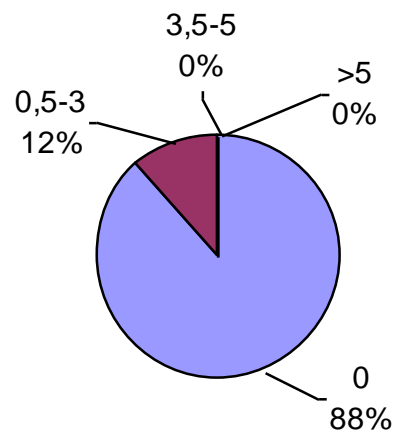
Laboratorio Picone

PREVALENCIA



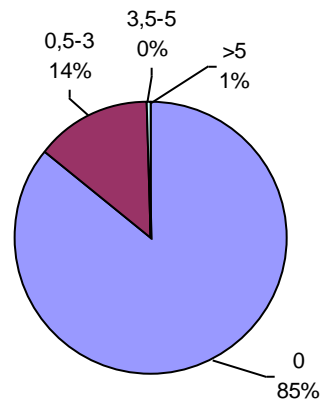
Facultad de Agronomía Azul – (UNCPBA)

PREVALENCIA



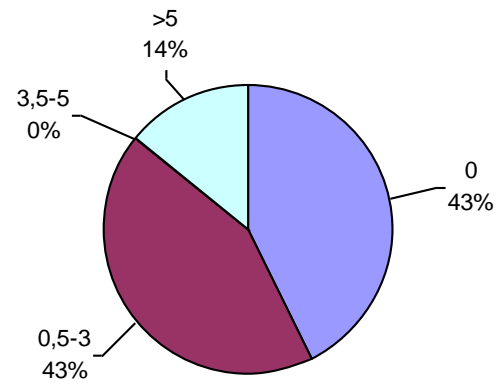
Laboratorio Agropecuario Lobería

PREVALENCIA



Laboratorio Ariel Grub

PREVALENCIA



Laboratorio Agrícola Venado Tuerto

PREVALENCIA

